



Established 1973

CONSULTANCY, SYSTEMS DESIGN & SPECIALIST INSTALLATIONS

**Audio & Video Door and Gate Entry • Access Control
CCTV • Intruder & Fire Alarms
Television & Satellite Distribution
Telephone, Internet & Data Networks
Multi-Room Audio Visual and Lighting Control**

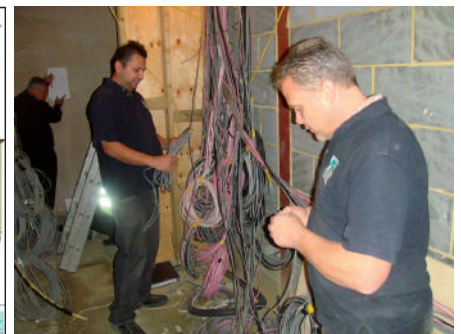
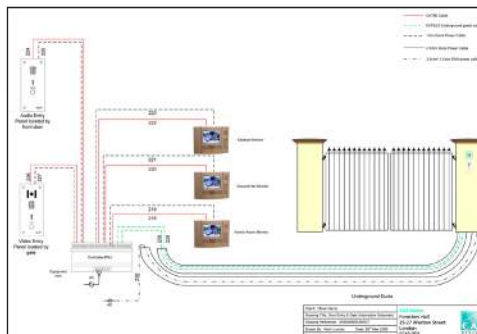
CAI Vision provides the complete package of **Security, Communications, TV and A/V Solutions** to the Residential, Commercial and Industrial Sectors, including Developers, Builders, M&E Contractors, Managing Agents, Local Authority Housing, Housing Associations and Government Departments.

From problem solving at the earliest stages - including system design and specification to long-term maintenance, whether you are developing a new build or refurbishing you will require specialist installations.

CAI Vision have been involved in some of the most prestigious and complex commercial projects, some involving the protection of extremely valuable items and people.

Over the years CAI Vision has built an enviable reputation for completing a project to specification, on time and on budget.

View a selection of our specialist installations on the following pages





THE COMPLETE PACKAGE FROM A SINGLE SOURCE

After more than 42 years of growth, CAI Vision provides a complete range of security, communications, audio visual and lighting control services to the residential, commercial and industrial sectors, including:

- **M&E Contractors and Construction**
- **Developers and House Builders**
- **HM Government**
- **Local Authorities**
- **Housing Associations & Trusts**
- **Managing Agents**
- **Architects**
- **Consultants**
- **Surveyors**
- **Interior Designers**
- **Prestigious Listed Buildings & Museums**
- **Retail & Commercial**

We have completed installations at: The British Museum, The Natural History Museum, The Tower of London and The Old Bailey. End users include: Nigel Lythgoe, John Cleese, Sir Peter Davis, Brit Eckland, Theresa Gorman, Des O'Connor and Michael Portillo, amongst many other well known personalities and celebrities.

We have worked on projects with Ove Arup, EMCOR engineering services, Wolff Architects, Ruskin Homes, Mansell plc, St James Homes and Manhattan Loft Corporation, and leading Interior Designers.

CAI Vision Specialist Installations include:

- **Closed Circuit Television**
- **Access Control**
- **Intruder Alarms**
- **Fire Alarms**
- **Telephone, Internet and Data Networks**
- **Communal TV Aerial and Satellite Systems – IRS**
- **Home Cinema**
- **Multi-room Audio and Video**
- **Lighting Control**
- **Automated Curtains and Blinds**
- **Consultancy**
- **Design**
- **Specification**
- **Supply**
- **Installation**
- **Maintenance**



Client: EMCOR Engineering Services

Developer: Manhattan Loft Corporation

Builder: Galliford Try

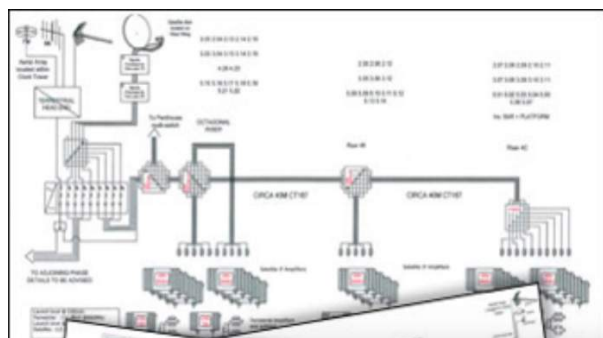
Project: St Pancras Chambers Hotel, Apartments & Penthouses - TV and Satellite Distribution Systems (IRS)

A Victorian masterpiece restored...Sir John Betjeman called this Gothic treasure “too beautiful and too romantic to survive” in a world of tower blocks and concrete. After years of devoted restoration, the **St Pancras Renaissance**

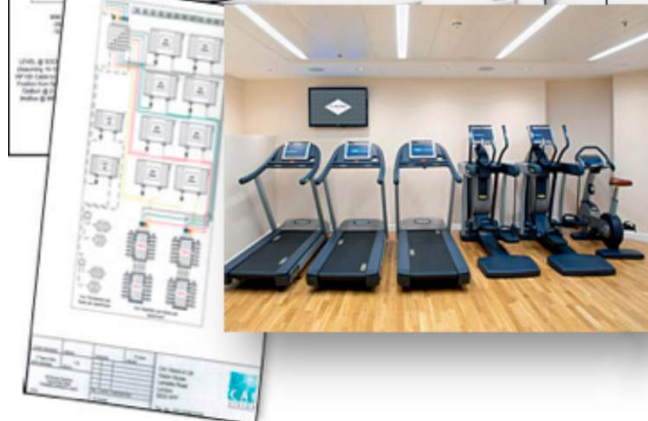


London Hotel is being hailed as the city’s most romantic building. This London 5-star hotel features glorious Gothic Revival metalwork, gold leaf ceilings, hand-stenciled wall designs and the grand staircase are as dazzling as the day Queen Victoria opened the hotel in 1873. Designed by Sir George Gilbert Scott to receive travellers through St Pancras Station, the former Midland Grand Hotel offered its guests a world of grandeur, luxury and fantasy behind its fairytale red facade. Innovations such as ascending rooms (elevators) and revolving doors heightened the sense of awe. **In 2011, the doors of this luxury hotel in London are spinning again, sweeping guests into a world where modern amenities mingle with the extravagance of rail’s golden age.**

are as dazzling as the day Queen Victoria opened the hotel in 1873. Designed by Sir George Gilbert Scott to receive travellers through St Pancras Station, the former Midland Grand Hotel offered its guests a world of grandeur, luxury and fantasy behind its fairytale red facade. Innovations such as ascending rooms (elevators) and revolving doors heightened the sense of awe.



‘London & Continental Railways’ worked in conjunction with **‘Manhattan Loft Corporation’** to regenerate St Pancras Chambers, **£150 million renovation** of the 245-room hotel consists of the historic St Pancras Chambers house 38 elegant and spacious Victorian bedroom suites, and Barlow House, named after William Barlow, the engineer of the original St. Pancras Station’s signature single-span arch train shed. Barlow house offers spacious rooms featuring contemporary artworks and design, each room is equipped with contemporary fittings and furnishings, online connectivity pack, plus international cable and satellite channels.



CAI Vision’s Brief : To supply and install a Multi-room 12ch UHF Television Distribution System to all hotel bedrooms, the bar areas, meeting/function rooms and an Integrated Reception System to serve the 67 apartments and some retail units located on the station concourse.



The Installation: The challenge on this project, to design and install both the systems to the Hotel development and the private apartments from just 1 no aerial array and 1 no satellite dish location due to the planning permission received and strict guidelines from English Heritage.

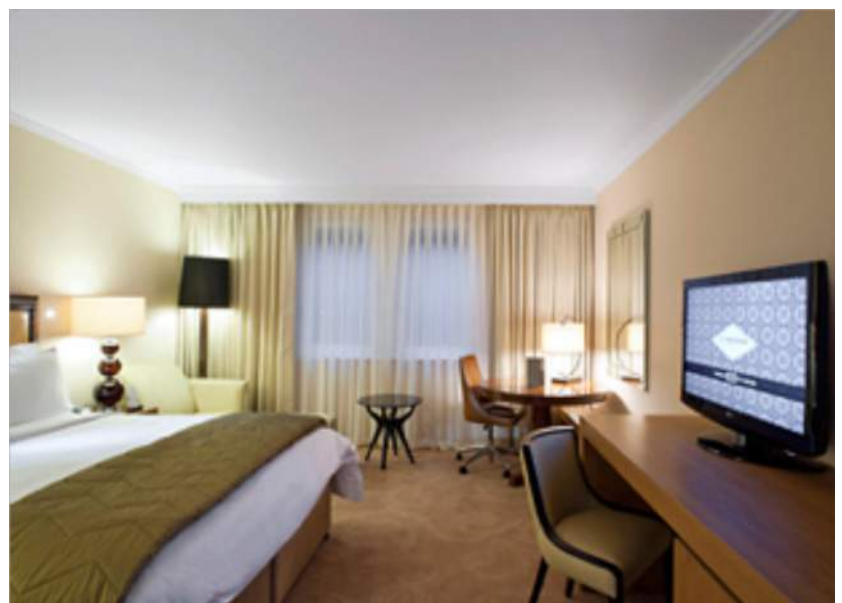
The aerial array had to be installed within the clock tower behind the glass clock face and the satellite dish was to be fitted on the roof of the new section of the hotel some 400m away.



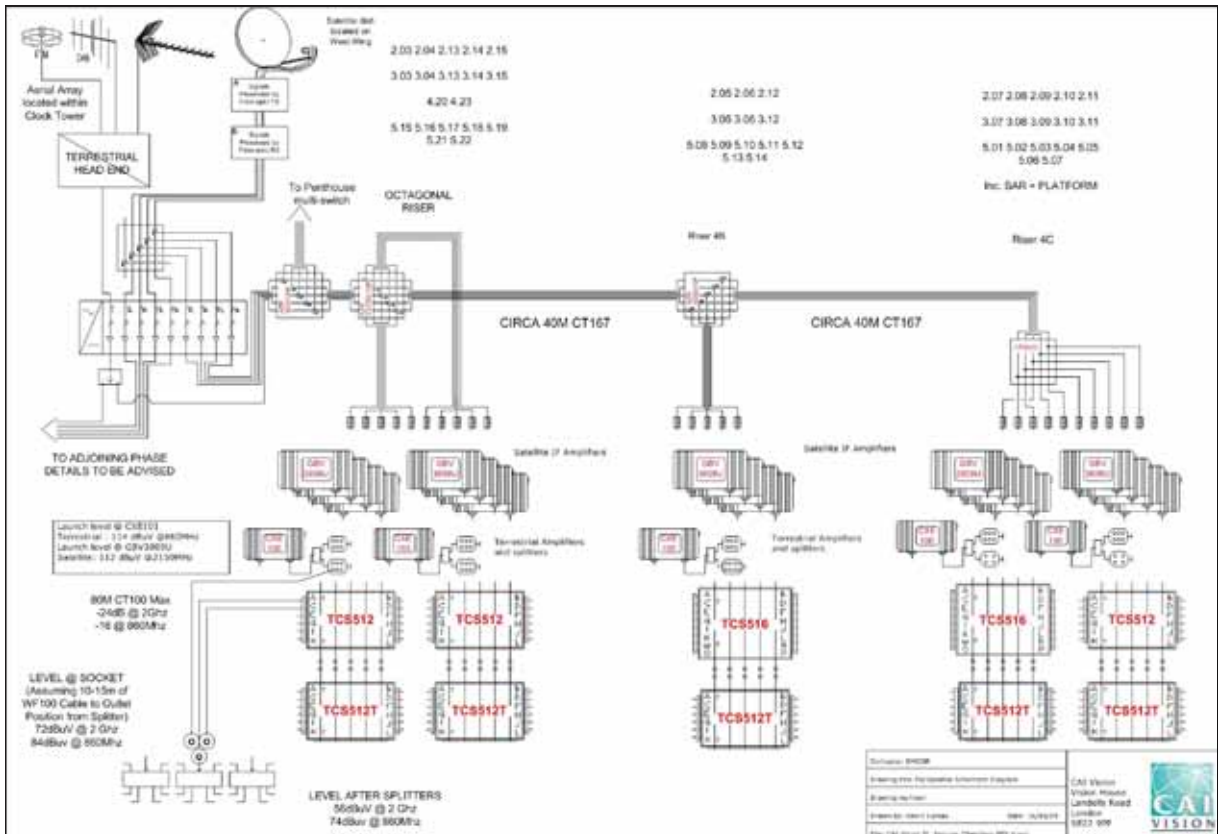
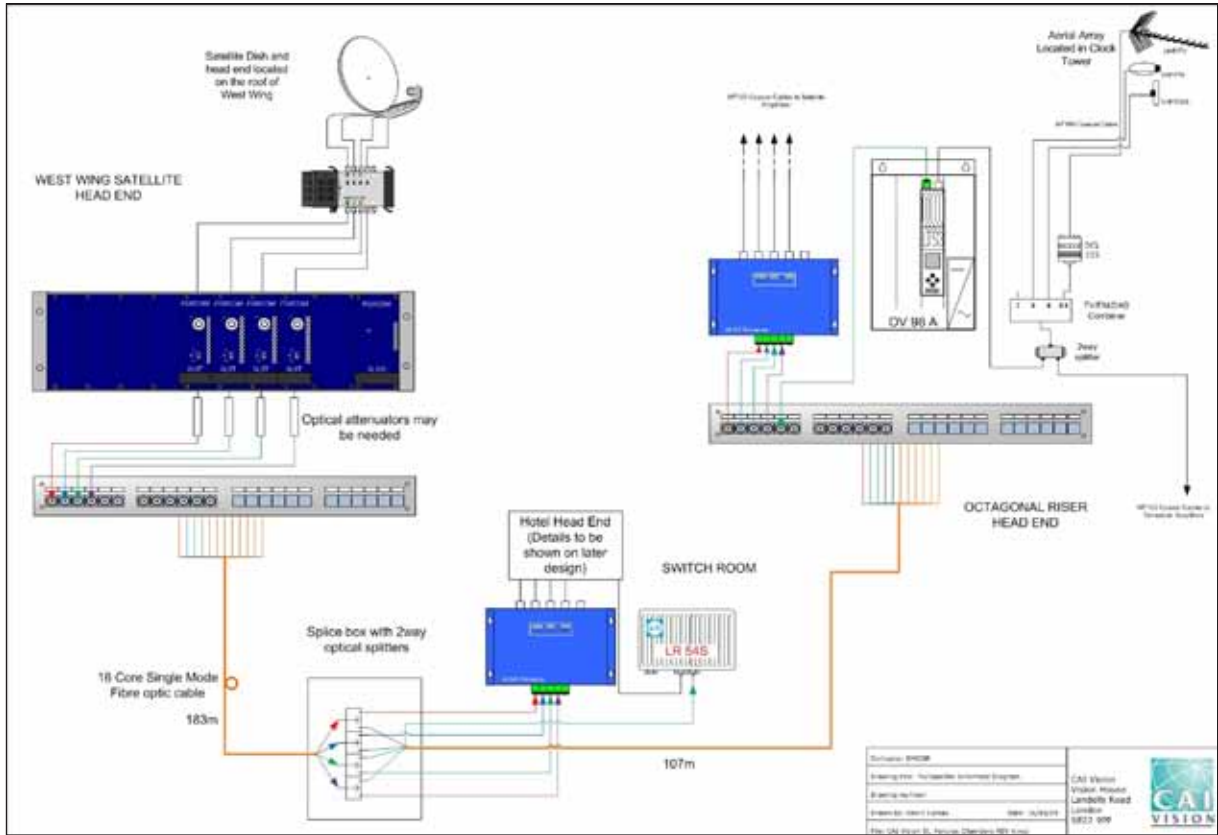
Above: **The Barlow King Guest Room**, named after William Barlow.

The magnificent interior has been restored to its former glory with painstaking attention to detail using expert teams of hundreds of craftsmen and painters. Many of the original areas of the hotel considered of particular historical importance have been carefully renovated including (Left the '**Ladies Smoking Room**', the first place in Europe where it was acceptable for women to smoke in public.

The solution: to receive the Terrestrial analogue/digital TV, FM, DAB Radio & Sky satellite TV to both sections was to use a hybrid fibre optic and coaxial cable system linking both phases. After installing the cables via the most arduous routes and installing the equipment in areas with quite a size constraint, we were able to provide all services to the apartments with the minimum amount of loss of signal quality.



Harry Handelsman, owner and CEO of Manhattan Loft Corporation, *"I am delighted that after more than 10 years of meticulous hard work we have now restored the former Midland Grand Hotel to its former glory. Since the unveiling of St Pancras International in 2007 the station has been given a much-deserved new lease of life and the opening of the hotel marks the completion of this massive achievement. Over the coming years the regeneration of the whole of the Kings Cross area into the capital's international business and cultural quarter, will make the St Pancras Renaissance Hotel London and its setting one of London's proudest achievements of the early 21st century."*



Actual Schematics size produced are A3



Client: International Embassy

Project: Ambassador's Residence - Installation of Integrated Security System

The Brief: To Design and Install a complete Integrated Security System at Ambassador's Residence.

Solution: Static Day / Night Cameras, (PTZ) Day / Night cameras, Redwall Movement Detectors, PC based Access, Control System, Comprehensive Panic Alarm System, Automatic Fire Protection System, X-ray machine



Clients verdict: *"the installation was carried out in a thoroughly professional and discreet manner with the minimum of disruption to the normal running of the Embassy".*

Due to the increased risk from terrorism our client felt it was necessary to increase security at the ambassador's residence. CAI Vision was chosen to design and install a system to assist the on-site 24-hour manned security.

It is essential that the security guards can monitor the complete perimeter of the building from the security office. CAI installed a number of different cameras to achieve this. Static Day / Night cameras were used to give high quality colour images during the day, switching over to high quality monochrome images at night when light levels are lower. Pan tilt and zoom (PTZ) Day / Night cameras were used to give the security operator the ability to move a camera and zoom in on any suspicious vehicles or people as desired.

Redwall movement detectors have been integrated with the PTZ cameras so if there is any movement in an area, the relevant camera will automatically zoom in to that particular location. All cameras are recorded 24 hours a day onto a digital recorder, which can store in excess of five weeks of footage.



Another important issue was to control the movement of staff and visitors in certain parts of the premises. A PC based Access Control System allows the Embassy to issue staff and visitors with proximity cards to control area access at specified times. The proximity cards also act as photo ID cards. The system is able to provide a print out of who has been where and at what time; this information can then be verified using CCTV recordings.

We installed a comprehensive panic alarm system, which included hand held radio devices so the client could raise an alert during an emergency.

There was also a concern about fire so we installed an automatic fire protection system. This incorporated smoke detectors, heat detectors, call points and sounders. An X-ray machine to check all post and parcels coming into the building was installed, together with walk through and hand held metal detectors to check all visitors before allowing access.

This was a challenging system to install largely due to the superior level of decoration at the premises. We went to great lengths to hide cables and make the system as discreet as possible, even digging trenches in the rear garden to hide cables and other equipment. The client was extremely impressed with the design and installation of the system and greatly appreciated the care and effort taken, considering the difficulties of working within the confines of such opulent decor.

The client has since recommended us to others.



Client: Mansell plc

Project: Princess Royal Hospital - Data Network, CCTV, IRS, Access Control, Video Door Entry, Alarms

The Brief: The design and installation of Data Network and Security Systems

Solution: Data Network and CCTV, HDTV, Radio, Media and Satellite Distribution (Integrated Reception System), Video Entry and Alarm Systems, Pac access system

Client verdict: "CAI Vision carried out the systems installations on time and within the budgetary constraints, to a very high standard."

Princess Royal Hospital was a development for mental health services for children and young people in West Sussex, East Sussex, Brighton and Hove; this is a new specialist day care and inpatient service which provides support for the community with the latest technology at the hospital's disposal.

This was a £7 million development which opened in March 2009. The service provides specialist mental health assessment and treatment for children and young people across West and East Sussex and Brighton and Hove. It represents the continuing investment in children and young peoples' mental health services.

It was designed to bring a first-class properly designed building that is designed to offer the best possible environment to the children and young people in the borough's care.

Cai Vision were given the opportunity to be involved with this project which comprised of the following disciplines:

- **300 point data installation over 2 floors**
- **CCTV Digital Video Recording System**
- **HDTV, radio, media and satellite distribution (Integrated Reception System)**
- **Video Door Entry System**
- **Intruder Alarm System conforming to PD6662: 2004 with Redcare GSM Monitoring**
- **Pac Securenet access control system to monitor the movement of staff with audit trail software**

We were responsible for the 1st, 2nd fix and final commission stages of all of the above disciplines, we've installed a state-of-the-art Cat6 Network infrastructure to accommodate the hospitals high speed Multimedia and Data networks which also incorporated high speed Cisco wireless access points.

The CCTV installation incorporated High resolution Day/night Cameras being recorded onto a Digital Video Recorder using the latest high quality Mpeg 4 video file compression, this ensures that the recording quality is not compromised and a high level is sustained. The HDTV, radio, media and satellite distribution (Integrated Reception System) and Door Entry systems ensured the highest A/V quality while the intruder alarm system was fully installed to the latest PD6662:2004 and EN50131 standard's which conform to the latest European standard.

The access control consisted of a multipoint proximity based fob system which controls in excess of 20 doors, this includes the control of Air locking door zones to the most secure areas, the system is fully administered via a PC and is capable of using the most secure technology available for proximity, even Biometrical access.





Client: St James Homes

Project: Grosvenor Waterside , Chelsea - IRS, Door Entry, Access Control CCTV and Audio Visual Systems

The Brief: The design and installation of Door Entry, CCTV, TV/Radio/Satellite and Data network systems to over 300 apartments.

Solution: HDTV, Radio, Media and Satellite Distribution (Integrated Reception System), Sky+ and multi-room HDTV, Door Entry/Access Control, CCTV, Audio Systems.

Client verdict: *“We are impressed with the standard of work and would be happy to work with you again.”*

St James Homes is an award-winning, design conscious, creative and sustainable developer with a record of culturally successful and diverse projects. St James is now a fully owned subsidiary of The Berkeley Group and continues to transform disused sites into sustainable and attractive developments.

This development was a multidiscipline installation for St James Homes, this project was a mixed development of private and social housing.

CAI Vision spent many months working with the developer, consultant and electrical contractor designing the:

HDTV, radio, media and satellite distribution (Integrated Reception System) ensuring that the developer understood the cabling requirements to allow for Sky+ and multi-room HDTV.

The door entry/access control designed for both types of property, colour video for the private and audio for the social housing.

CCTV was designed to ensure the vulnerable areas were covered but also that all areas day or night produced good images.

We also pre-wired all private apartments for audio systems including installing speakers so any tenants can purchase audio equipment with advice from us.





Client: Natural History Museum/DE BEERS

Project: Natural History Museum High Tech Security Systems

The Brief: Installation of Integrated Security System for the DE BEERS DIAMOND COLLECTION



Solution: Security, Alarm System and CCTV system

Client verdict: “CAI Vision were chosen to provide the Security for the De Beers Diamond Collection. Their professionalism ensured that the installation created the minimum of disruption to the museum”.

When the Natural History Museum opened its “**Earth Galleries**” Exhibition in 1998, they chose CAI Vision to supply, install and maintain a ‘high tech’ Electronic Security System, including various alarms and close-circuit television for the world famous De Beers Diamond Collection.



The collection of jewels includes a 17-carat diamond the size of a peach stone, worth over £1.5 million, an emerald the size of a lemon and rubies and sapphires ranging up to the size of grapes. The total collection is said to be worth many millions of pounds.

Extract taken from Evening Standard Article: “The Natural History Museum has had to invest in no fewer than seven layers of security, in addition to the normal alarms and patrols. The room through which the public will wander is equipped so that all those entering are automatically recorded on camera, while the gems are protected with beam, pressure and sonic glass-breaking alarms, together with other devices the museum won’t divulge.”

Client: The Corporation of London

Project: The Old Bailey - TV Distribution

The Brief: To supply and install a communal TV aerial system providing terrestrial TV channels with sufficient capacity to serve all the judges chambers.

Solution: Aerial array. Professional distribution system and concealed cabling.

Client verdict: “Extremely happy with the installation.”



The Old Bailey is the foremost court in the UK and as such presented its own unique situation to overcome. Firstly all operatives had to be vetted to be able to work in this building, secondly the aerial array could not be visible in the sky line and all drilling or other works which produced any noise could only be carried out within a 2hr time frame during the courts recess for lunch so as not to disrupt the courts proceedings and lastly all cables had to be discretely installed with no damage to the building structure due to it being a listed building.

The Installation: The aerial array had to be positioned at low level so that it could not be visible within the sky line with St Pauls Cathedral. The main distribution system was installed down the communal riser with each floor having the facility to connect to the system.

All the cables installed to the Judges chambers had to be run via various ceiling voids, riser cupboards and finally in trunking within the room all under the pressure that we could be held in contempt of court should we cause any disruption whilst any of the court rooms are in session.

The Result: Good quality TV reception and no one going to the cells.



Client: Antoli Developments

Achitect: Wolff Architects

Interior Designer: Beverley Williams Interiors

Project: Complete refurbishment - Custom Installation

The Brief: The design and installation of an Integrated Reception System and multi-room Audio Video.

Solution:

Home Cinema, Multi-Room Audio-Video, Automated Lighting, Curtain and Blind Control, Television, Radio and Satellite Distribution, Telephone, Internet and Data Network, Intruder Alarm, Fire Detection, Closed Circuit Television, Heating, Ventilation and Air conditioning Control, Electrical Installation, Inspection and Testing.

Client verdict: *“We’ve got to hand it to CAI Vision. They delivered exactly what they promised, the very best in home entertainment systems with security to match. We will be working together again very soon.”*

Wolff Architects of Notting Hill contracted CAI Vision to design and install a integrated reception system and multi-room audio video, as part of a property refurbishment in North London.

The installation of the integrated reception system and lighting, along with a video entry system in such a premium property needed to be carried out within strict time scales and budget. Wolff stipulated that all works, including cabling be installed by the one contractor as they wished to avoid any problems that might arise with sub-contracting.

As CAI Vision provide all the necessary skills and personnel to install all that is contained within a specialist installation, there was no problem. In fact we completed the installation before the timescale required, much to the delight of Wolff Architects.

They were also most impressed at the speed with which we completed the design and installation of the multi-room audio and video system, throughout the property.

Installing exclusively Pioneer Plasma HDTV screens along with concealed speakers and a wall mounted touch screen controller in each room, provided a truly high quality experience. We also installed a digital amplifier and iPod docking station.

The completed system can be controlled and adjusted from any of the wall mounted touch screens or from a hand held controller or iPhone.

At sign off of the completed installation we were told by Wolff Architects that they were confident that CAI Vision would be their first port of call for any future specialist installation requirements that they have.





CAI Vision Clients

HOME OWNERS

John Cleese
 Sir Peter Davis
 Brit Eckland
 Seb Fontaine
 Theresa Gorman
 Nigel Lythgoe
 Des O'Connor
 Michael Portillo
 Ben Fogle
 Christopher Biggins

M&E CONTRACTORS & CONSTRUCTION

EMCOR Engineering Services Apollo Property Services Essex Services Group HKH Building Services Breyer Group Galliford Try Mansell Skanska	Rooff Mulalley Botes John Laing Construction United House (Construction) Wates Construction A C Sewell (City) Gale & Dawes T Clarke PLC
--	---

DEVELOPERS & HOUSE BUILDERS

St James Homes Wates Group Wimpey Sir Robert McAlpine Trafalgar House John Laing Taylor Woodrow Kier London Richardson	Manhattan Loft Corporation Parkheath Estates Ruskin Homes Telford Homes Antoli Goldcrest Homes Stirling Properties and Investment Ward Homes
--	---

ARCHITECTS, CONSULTANTS & INTERIOR DESIGNERS

Ove Arup Wolff Architects Found Associates: Richard Found Pellings LLP Consultants Robert West & Partners M&E Design Services Howard Humphreys	David Miles & Partners Fisher ID Beverley Williams Interiors HOW Engineering Services Hunter & Partners Peabody Design Group
--	---

PRESTIGIOUS LISTED BUILDINGS & MUSEUMS

No10 Downing Street The Home Office The Foreign Office The Old War Office The M.O.D. building Whitehall St Pancras Chambers Natural History Museum The Old Bailey Tower of London	Royal Naval College British Museum River & Rowing Museum Princess Royal Hospital Various International Embassies
---	--

RETAIL & COMMERCIAL

Prada FCUK Paul Smith Retail 24 Crush Citadines Aparthotel Commercial Union Assurance (Aviva Tower) Prudential Maroush Restaurants Movida Night Club Sevenoaks Sound & Vision British Gas National Westminster Bank	Nicolas Wines Prudential Sainsbury's The Natural History Museum (De Beers Diamond Collection) William Hill Geyfords Car showrooms Freedom Leisure Centres Ebonycare Gap B&Q Rexel Senate/ WF Electrical
---	--

MANAGING AGENTS

JJ Homes HML Anderton Cluttons Hawkesworth & Co Haywards Monktons & Co Rendall & Rittner Castle Wildrish Freehold Managers (Nominees) Ltd	Kinleigh Folkard & Hayward Cranbourne Court Management Ltd Urban Property Management Ltd
---	--

GOVERNMENT & LOCAL GOVERNMENT

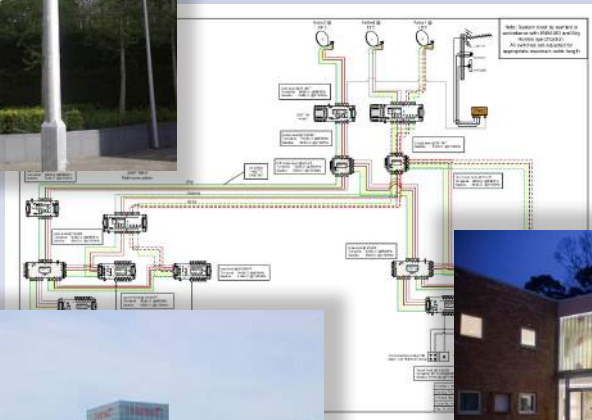
H M Customs & Excise Corporation of London London Borough of Brent London Borough of Camden London Borough of Croydon London Borough of Greenwich London Borough of Hackney London Borough of Islington	The Royal Borough of Kensington & Chelsea London Borough of Lambeth London Borough of Newham London Borough of Tower Hamlets London Borough of Wandsworth The City of Westminster
--	--

HOUSING ASSOCIATIONS & TRUSTS

Springboard One Housing Group Broomleigh Housing Association Hyde Housing Association Octavia Hill Housing Association	Orbit Housing Association Poplar Harca Southern Housing Group The Guinness Trust Bancroft TMC Eastend Homes
--	--



CONSULTANCY, SYSTEMS DESIGN & SPECIALIST INSTALLATIONS



CAI Vision · Unit 1 · 1A Carberry Road · London SE19 3RU
t: +44(0)20 8768 2800 · f: +44(0)20 8768 2200
www.caivision.com · www.caivision-ci.com